




Hi-BEE NEWS

Newsletter for the Hawai`i Beekeepers' Association (Vol. XV) June 2001

HBA Quarterly
Membership Meeting and
Field Day
Sunday, July 22nd
Noon - 3:00 PM
Iron Horse Farm - Kahalu`u



any time. The motion discussed, voted on and passed to read in the revised HBA bylaws as follows: Honorary membership may be conferred on anyone helpful to the Association by a majority vote at any meeting, provided a quorum is present.

Secretary Al Santoro submitted his resignation from the board. Nominations to fill the vacancy of the Director at Large position were taken from the floor with 2 nominees: BRIAN BAUER and DUKE SABEDONG. Brian was elected by majority vote.

The official business portion of the meeting was adjourned at 1:30 pm. Presentations and classes followed.
Al Santoro, Secretary

Directions to Iron Horse Farm:

KAHEKILI HIGHWAY. towards the North Shore (4+ miles from the Likelike intersection), past Temple Valley, past the next outcropping of stores (Hygienic Market, gas station). Go over small bridge (see Chinaman's Hat on right), turn left immediately after bridge onto WAIHEE ROAD, (marked with a fire station sign) proceed to first real right turn. Turn right onto AHILAMA ROAD, bear left at first fork, bear left at second fork onto a "private road/dead end" street. This is our driveway: 47-814 Ahilama Road. See a large sand-ring and red & cream farm, drive to the large indoor arena, find a parking spot. There will be fun stuff for the keikis too. If lost, call 478-9654 or 479-3479.

Minutes of Last Mtg on 3/26/01

Quarterly Membership Meeting held at the Damon estate in Salt Lake was opened by Pres. Ian Damon at 12:30 PM. Over 30 members and family present, quorum was established.

The HBA 2001 Budget was presented, voted and passed. A copy of the budget is held by the President and the Treasurer. Changes to the bylaws affecting membership categories and dues were presented, voted on and passed.

A motion was made from the floor to reinstate the membership category described as "Honorary Member". Such a member is recognized as a friend of beekeeping in Hawai`i, pays no dues, receives a newsletter and has no vote. Any previously chosen Honorary Members will retain that status and are welcome to become regular paying and privileged members at

President's Cell



Aloha Bee Enthusiasts!

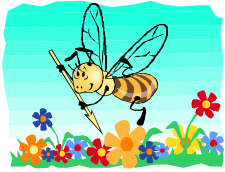
We had a marvelous March Quarterly Membership Meeting judging by the amount of fun I had and the response of some members. It went pretty well in spite of some big family illness setbacks. ERIC VOM DORP's mom was in the hospital ... he was set to talk about hive maintenance and hive building. GARY GRIEVE's dad-in-law was in the hospital ... he was to demonstrate how he builds his own high quality (better than Dadant) supers and frames out of mahogany! I ended up taking over at the last minute for Gary and Eric on hive building while Dennis Takata took over for Eric on hive maintenance (nicely done, I might add, Dennis).

As for our guest speakers, the advertised "others" ended up buggin' out, but GUS ROUSE of Kona Queen fame pulled through for our crowd of 50 to 60 people.

Since then I've drawn up templates of Gary's hive parts jigs in the computer for HBA members use and for the Web site.

I am making progress on the Web site but it is slow going as other priorities take precedence for the President. I therefore ask that if there are any Web programmers and artists out there that would like to contribute to the website, your abilities and efforts would be quite welcome.

Aloha, mahalo & see you at the next fun Membership Meeting ... a hui ho! IAN :-)) damoni002@hawaii.rr.com



May in the HiBee Yard

It is May in the bee yard at Waimanalo and things are starting to pick up. I see a lot of activity in the front of the hives - some clustering due to the reduced openings that I installed during the slow winter months. For those hives, I remove the blocks and open the entire bottom.

It is also the season for swarming. For the hives that have a lot of activity in the front, I remove the top covers and examine the brood frames. There was one hive in which the bees had started drawing swarm cells. Since it was a hive made of 4 western (middle) sized boxes, I split the hive in half. The purpose of doing that is to limit the number of bees that I would lose should the queen swarm.

I have found that it is very hard to prevent a hive from swarming because it is a natural instinct for the bees and I can't be at the bee yard all the time to catch those swarms. The half that does not have the queen will make a queen in one or two weeks and will be an addition to the yard or it will take the place of a failing hive.

I aired out a few boxes that I had placed in large plastic bags with a few mothballs. It was suggested in the last article to air boxes out for several weeks before reusing. But I found that while airing out the boxes after only one day, the bees went in to rob the left over honey in the frames. I felt that if the bees will enter the boxes to rob it, it should be safe to place back on the hives without any major problems. I place these boxes on hives that had a lot of activity and did not show signs of swarming.

My plans for the next few weeks are to make more bottom boards and have a few more boxes and frames ready for more possible swarm prevention. It's always a good feeling when you have made the proper preparations. Until next time ... good-bye. *Dennis Takata, Vice-President*



Help Hints for Bee Stings

The most important thing to do is to immediately scrape the stinger off. Do not rub or squeeze it. Then put ice on the sting for half an hour after the sting. When children get stung, liquid children's Benedryl is effective for reducing swelling and minor allergic reactions. The doses for children are given on the package or bottle, but as always consult your doctor.

For those of you (and your neighbors) with pets, keep liquid Benadryl on hand to alleviate the swelling and ease breathing. Tablets are OK but the liquid works much faster. Call your vet for the dosage for your pets. *Carlene Damon*



Argentine Honey Producers Protest

Buenos Aires, Argentina (AP) - Hundreds of honey producers in beekeeper suits sprayed smoke canisters and waved banners outside Government House, protesting hefty new U.S. tariff on Argentine honey imports.

The demonstrators, who set up hives with live bees on a downtown boulevard, maintained Argentine honey was being unfairly hit by a tariff in excess of 50 percent.

The dispute has gained media attention since a decision earlier this month by the U.S. government to penalize Argentina for subsidizing honey production.

"Honey, we've got problems!" read one headline in the **Buenos Aires Herald**. The newspaper noted that Argentina exports 80,000 tons of honey abroad each year, half of it bound for the United States.

American producers have complained the subsidies allow Argentine honey to sell in the United States at much lower prices, stinging local competitors.

Argentina's government contends the money it gives to honey producers is a tax refund.

Argentina only consumes 5 percent of the honey it produces, while exports net as much as \$100 million annually, according to the Herald.

(Credits to Guardian Unlimited website, article dated 5/22/01) www.guardian.co.uk/breakingnews

Bumble Jumble

LYROA YLJLE _ _ _ _ _

ANNLICORA _ _ _ _ _

NMASEO _ _ _ _ _

KWREOR EBE _ _ _ _ _

LEVI _ _ _ _





FOR SALE

Rodney 689-0340,
288-8498

New POLLEN TRAP \$35.00

Bee Healthy ... make your own pollen!

BUCKETS for sale

Pollen, Royal Jelly, Kiawe Honey

Michael Kliks 988-7203

Sundance POLLEN TRAPS - the world's best.

Sits directly on bottom board with drawer opening at rear of hive. Can be opened & closed and left on all year. \$68 delivered Honolulu. Compare at \$90 from catalogs

ROSS ROUNDS

Comb honey suppers complete with frames. Ready to go, just add foundation.

\$39 delivered Honolulu.

Compare at \$53 in catalogs.

Master and Speed ELECTRIC KNIVES

New, with built in thermostat, the best uncapping tool ever! Same as Dadant #MOO339 and 340 but with 20% off listed price to HBA members only. \$55 + s/h

2-Story HIVES in good condition with bees, 10 frames each box, unified hive body and honey super with entrance door suitable for use as pollination units. \$150

Field sites can be arranged.

HONEY EXTRACTOR in good condition, \$225 LITTLE WONDER model, 4 frame, manual, with stand. New price is \$320 + s/h

EZ SMOKE - Pelletized smoker fuel produces cool, slow burning smoke. 5 oz lasts 3+ hours, no relighting. \$3 per 16 oz bag.

\$12 per 5 lb bag.

PARADICHLOROBENZENE

100% pure "moth balls" in crystal flakes.

\$15 for 5 lb. \$55 for 25 lb.

Compare with Dadant's \$23 for 5 lb + \$10 s/h.

Notes on the NZ Bee Transshipments and Seed Corn Growing Activity in Hawai'i

Hawai'i's beekeepers need to know the current status of the USDA's rules that::

1. Will continue to permit transshipment of contained queens and package bees through Hawai'i, and
2. Prohibit (for now at least) any importation of NZ bees into Hawai'i. I have also heard that Australia may apply for permission to import bees into Hawai'i.

We also need to address the issue of the rapid expansion of the seed corn industry here on O'ahu, on Kaua'i and I assume on Hawai'i as well. I am not certain if any transgenic corn types, those with the *Bt* gene or other inserted genes, are being grown here as yet, so I will not take the time to address that issue at this time. However, if anyone has any info, and/or would like to comment on that matter please do so and I will either include it in the next newsletter.

Regarding the seed corn growing activity here on O'ahu:

I have already experienced several moderate to severe kills in among my hives at 'Opae'ula that are about 1/4 mile from several large corn plantings. I have notified the Pesticides Branch of the DOA but they were not able to get out there in time to collect useful bee samples. They did call the grower but did not get a call back, at least as far as I know at this time. We are all aware of what happened to Rod Frank's assets on Kaua'i due to improper pesticide applications by several growers there. Here on O'ahu seed corn farming is spreading very rapidly. Many farmers who hold leases on large parcels in the 'Eva-Kapolei-Kunia corridor of O'ahu have reduced their own crop activity and are growing seed corn under contract to Novartis, Pioneer Seed and other huge multinational corporations. These areas also contain many traditional apiculture sites, especially for *kiawe* and Christmas berry.

Each seed corn crop cycle requires at 10 to 22 applications of pesticide, including both insecticides and herbicides. All of this is done during the daylight hours. Although the labels of all of these pesticides contain Federal and State prohibitions of their application if honeybees are visiting the target crop or any other flowers in the area, it appears to me that these regulations are not widely observed. Of course, beekeepers can usually move their assets out of danger if they are notified of impending pesticide use. We've discussed this before and perhaps should do so again. Heavy pesticide usage could lead to the demise of most of the feral bee colonies. Ironically, this could make cucurbit, citrus, coffee and macnut farmers even more dependant on managed pollination services!

I will be most appreciative to learn of any activity on these matters and to have any current comments, leads and background info that you can offer on these questions.

A hui hou, Michael M. Kliks, PhD





Create a Buzz at the Farm Fair!

The HBA will host a booth at the Aloha Stadium's Farm Fair in August:

Fri, Aug 10 6 - 10 pm	Sat, Aug 11 Noon - 10 pm	Sun, Aug 12 Noon - 10 pm	
Thu, Aug 16 6 - 10 pm	Fri, Aug 17 6 - 10 pm	Sat, Aug 18 Noon-10pm	Sun, Aug 19 Noon-10pm

Volunteers Needed

Here's a big one where the HBA needs it's members to help. We can't do it without your efforts and support. Please help by sending an e-mail to damoni002@hawaii.rr.com or call 239-0232 and leave a message with your name, phone #, and what time shifts you can work the booth (shifts are from Noon to 3PM, 3PM to 6PM, and 6PM to 10PM) or any other help you can offer.

We would love ideas for the booth from everyone!



Mahalo nui for your kokua!
Da Prez ... lan `~`)

Bee Stuff

A collection of American Bee Journal magazines, Bee World, and other bee-related information (video tapes & books) is available for HBA members to review and check out at:

TRIPLE F DISTRIBUTING 808-842-9133
5 Sand Island Access Rd., # 904 Honolulu, HI 96819
(Hrs.: Mon-Fri 8-4:30 PM)

Any donations to our library are welcome!

Answers to Bumble Jumble
Royal Jelly, Carniolan, Nosema, Worker Bee, Veil

Advertising Rates

Copy, art and payment must be submitted by the 15th of the month prior to publication. Contact Fred Salassa or Dovlyn Shyer 842-9133 (fax 842-1184) for info.

CLASSIFIED ADS: 15 words or less, per issue:

HBA members \$ 2.00
Non-members \$ 3.00

BUSINESS ADS: per issue:

Business card size \$ 7.50
Quarter page \$ 20.00
Half page \$ 35.00
Full page \$ 60.00



Membership Renewal

Membership in the Hawai'i Beekeepers' Association is open to anyone who has an interest in bees and beekeeping! You do not need to own bees or reside in Hawai'i to join.

The current membership dues are:

- Regular ... \$15 each (foreign \$20).
- Family ... 1 Regular plus \$5 each add'l family member, maximum of \$25 per family.
- Associate ... \$12
- Sustaining ... \$50 or more.
- Corporate ... \$100 or more.

Please pay dues by Jan 1st of each year. Regular Membership includes a vote in HBA elections, discounts on bee-related publications, a subscription to Hi-BEE NEWS and much more! Associate Members receive the Hi-BEE NEWS only. Sustaining and Corporate Members receive advertising discounts and other benefits.

Name _____

(Add'l Members) _____

Address _____

City, State & Zip _____

Phone _____

Fax _____

E-mail _____

Type of membership _____ Amount \$ _____

Add'l Contribution \$ _____

Total Amt Enclosed \$ _____

Check Date _____ Check # _____

**Write check to "Hawai'i Beekeepers' Association"
or "(HBA)"
and mail to:**

Charles Wong, Treasurer
99-1049 `Aiea Heights Drive, `Aiea, HI 96701